

STOP: Make sure you are using the correct side of this sheet. Windows Users: Follow This Side. Macintosh users: See other side.

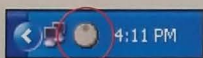
INSTALLING YOUR SHUTTLE DEVICE SOFTWARE

IMPORTANT: You must un-install any previous Shuttle device software before proceeding. For detailed instructions please refer to the Windows Shuttle User Guide on the installation CD.

1. Make sure your computer conforms to the following requirements for installation:
IBM-compatible PC
Available USB Port
Microsoft® Windows® 98, 98SE, Me, 2000, or XP operating system
2. To ensure a clean installation of the Shuttle device software, disable any anti-virus software, save and close any open documents and quit any non-essential active applications before continuing.
3. Connect the Shuttle device to a USB port on your computer and accept the prompts when Windows automatically installs the HID driver for your new hardware.
4. Insert the Shuttle device software CD into your CD-ROM drive.
5. The CD should auto run and display the Windows driver main menu. Select "Install Driver" and follow the on-screen instructions as prompted by the automated installer. **Note:** If the CD does not automatically open the Windows driver main menu, locate "autorun.exe" on the CD and double-click it with your mouse.
6. After your Software is installed you are ready to begin operating your Shuttle device.

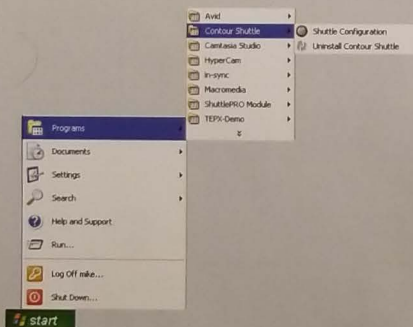
Opening the Shuttle Device Control Panel

To open the Shuttle Device control panel, locate the Shuttle Helper icon in the lower right hand corner of your desktop and click it. From the menu choose Open Control Panel.



OR

Click on the Start menu, select Programs, browse to the Contour Shuttle folder and choose Shuttle Configuration.



Shuttle Device OPERATING TIPS

The Shuttle device Control Panel is the interface you will use to manage your application settings. Each application that you want to control with the Shuttle device must have its own unique application setting. You cannot specify which setting is currently active through the Control Panel. Each of the application settings are linked to the application that it supports and will AUTOMATICALLY load when you launch the associated application.

Click on the Shuttle Helper icon and it will display the current active application setting. If there is more than one setting for a particular application, you will see them listed here. The setting with the check is the current active setting. To select one if the others, simply click on its name.

The majority of Shuttle device users operate the Shuttle with one hand and their mouse with the other. The Shuttle is not a replacement for your mouse and this setup will avoid the need to switch hands from one device to the other.

The two top rows of buttons on the ShuttlePRO series of controllers can be labeled using the included sheet of labels. The button caps are easily removed with a fingernail or paperclip and will snap back in place after you place a label inside them.

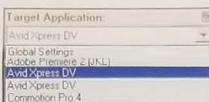
For detailed information about programming your Shuttle device, please refer to your user's Guide found on the Software CD or log-on to <http://www.contourdesign.com>

The Contour Shuttle Control Panel is where you will find all the information you need to manage your device.

NOTE: You must press "Apply" or "OK" to save the changes you have made during your session.

1 TARGET APPLICATION MENU

This is the menu for viewing or selecting your Application Settings. Application settings define what Shuttle components (buttons or knobs) do in different applications. Browse this list to see what software applications your device is ready to control. If you want to control additional software applications with your device, you will need Application Settings for them. This is the menu for creating or managing your Application Settings.



GLOBAL SETTINGS - This is a generic setting that defines what the device will do in software programs that don't have their own Application Settings.

INSTALLED SETTINGS LIST - This is the entire list of Application Settings that are installed. Contour approved settings are labeled with "Factory Settings" Custom settings are labeled "Customized Settings".

2 OPTIONS BUTTON

This will open the menu for the many options to manage your Application Settings.

Options

CREATE NEW SETTINGS- If you want to control a software program with your device but no pre-configured settings are available for it, this command will let you create your own Application Setting.

RENAME SETTINGS- allows you to rename an existing setting. You must press Enter on your keyboard to save your changes.

CHANGE TARGET APPLICATION- This changes the application the setting will work in.

CHANGE TARGET DEVICE- If you have two of a particular Shuttle device, this command enables you to select the device the setting is assigned to.

REVERT TO FACTORY SETTINGS- If you have modified a Contour approved setting, this will return the setting to its original state.

REMOVE SETTINGS - deletes an Application Setting from the control panel.

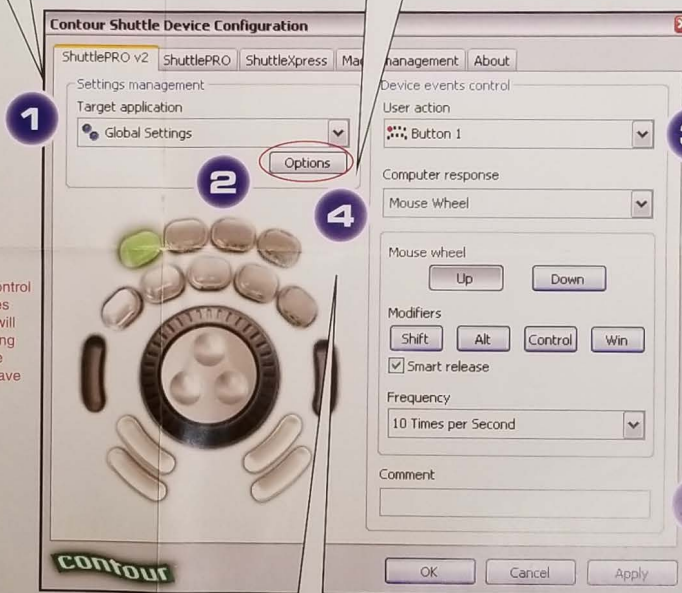
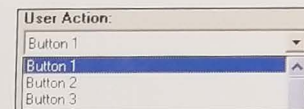
IMPORT SETTINGS - is for loading a saved setting into the Shuttle Control Panel.

EXPORT SETTINGS - saves a copy of an Application Setting for sharing or backup.

EXPORT SETTINGS INFO- exports readable information about the currently selected application setting.

3 USER ACTION MENU

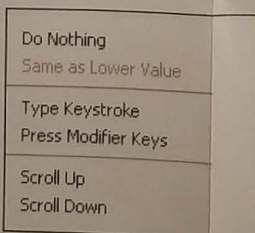
This menu selects which Shuttle component you are displaying or editing in the Control Panel. If you'd like to re-program a setting, you will select the application setting in the Target Application menu, and then select the Shuttle component you'd like to re-program in this menu.



Note: The Control Panel features and images will vary depending on the shuttle device you have installed.

4 COMPUTER RESPONSE MENU

This menu is where you determine what the device button or knob selected in the "User Action" Menu will do when activated.



DO NOTHING- The Shuttle component is inactive.

SAME AS LOWER VALUE- Selecting this lets you duplicate the commands for the previous Shuttle position. For example with this option you can program the Shuttle knob to perform the same command in shuttle Zone 2 as Shuttle Zone 1.

PRESS MODIFIER- This command lets you activate the keyboard modifier keys Shift, Alt, Control, and Windows with a Shuttle component.

TYPE KEYSTROKE- This option lets you program a keyboard shortcut to the Shuttle component selected in the User Action Menu. You can program such commands as Control-S for save, the right arrow key to advance 1 frame, or "Control-C" to copy a selection to the keyboard. Consult the applications user's guide or help menu to find the keyboard shortcuts associated with it. You must click your mouse into the field to activate it before programming.

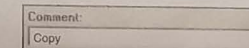
MOUSE CLICK- This command enables you to simulate a mouse click, with the options of modifier keys and frequency.

MOUSE WHEEL- This command enables you to simulate a mouse wheel movement. You can select Up or Down, with the options of modifier keys and frequency.

SWITCH SETTINGS- If you have more than one set of application settings for a

5 COMMENT FIELD

This is an optional field where you can briefly describe the Shuttle component setting for your quick reference. You may find it particularly helpful if you program your own settings and want to quickly review what each button or knob does.



particular application, this command enables you to switch to the previous or next set.

MACRO-This command enables you to assign an available macro to the Shuttle component selected in the User Action Menu. Please consult the User Guide for more information about macros.

LAUNCH ITEM- With this command you can assign the Shuttle component selected in the User Action Menu to open a file or launch an application.

STOP: Make sure you are using the correct side of this sheet.
Macintosh Users: Follow This Side. Windows users: See other side.

INSTALLING YOUR SHUTTLE DEVICE SOFTWARE

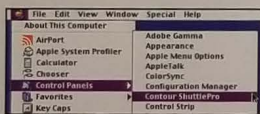
IMPORTANT: You must un-install any previous Shuttle device software before proceeding. For detailed instructions please refer to the Mac User's Guide on the installation CD.

1. Make sure your computer conforms to the following requirements for installation:
 - Apple iMac, PowerMac G3, G4, G5, PowerBook or iBook
 - Macintosh OS 8.6 through 9.X or OS X
 - OS 8.6 users must have Mac OS ROM Update 1.0.
 - OS 8.6 through 9.0.4 users must have Apple Game Sprockets Version 1.7.5 or later installed.
 - OS 9.0 users are strongly recommended to update to OS 9.0.4 or later.
 - OS X users should install Contour's OS X-native Shuttle device software.
 - Available USB port
 - Hard drive with 1.5 Megabytes of free space available.
2. To ensure a clean installation of the Shuttle device software, disable any anti-virus software, save and close any open documents and quit any non-essential active applications before continuing.
3. Connect the Shuttle device to a USB port on your computer.
4. Insert the Shuttle device software CD into your CD-ROM drive.
5. Open the folder on the CD that contains Shuttle device software for your operating system.
6. Launch the Shuttle device software installer by double-clicking it with your mouse.
7. Follow the on-screen instructions as prompted by the automated installer.
8. After your Shuttle device software is installed, the Shuttle Control Panel will be active on your computer and you are ready to begin operating your Shuttle device.

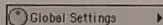
Opening the Shuttle Device Control Panel

Mac OS 8.6- 9.X

To open the Shuttle device control panel in Mac OS 8.6 - 9.X, click the Apple pull-down menu and select "Contour ShuttlePRO/ShuttlePRO2/ShuttleXpress" in the control panels menu. ShuttlePRO series users can alternatively open the Control Panel by selecting "Open ShuttlePRO/ShuttlePRO2 Control Panel" in the ShuttlePRO/ShuttlePRO2 Control Strip Module.



OR



Mac OS X

To open the Shuttle device control panel in Mac OS X, double-click the on the Shuttle device icon in the Applications folder.

Shuttle Device OPERATING TIPS

The Shuttle device Control Panel is the interface you will use to manage your application settings. Each application that you want to control with the Shuttle device must have its own unique application setting. You cannot specify which setting is currently active through the Control Panel. Each of the application settings is linked to the application that it supports and will AUTOMATICALLY load when you launch the associated application.

Applications such as Final Cut Pro and Adobe Premiere have more than one set of application settings pre-configured for use with your Shuttle device. For OS X we have programmed the "Bottom Right Button" on the ShuttlePRO series of controllers to switch between settings. For OS 8.6-9.X you must choose the setting that you would like to enable from the ShuttlePRO series control strip module.

The majority of Shuttle device users operate the Shuttle with one hand and their mouse with the other. The Shuttle is not a replacement for your mouse and this setup will avoid the need to switch hands from one device to the other.

The two top rows of buttons on the ShuttlePRO series of controllers can be labeled using the included sheet of labels. The button caps are easily removed with a fingernail or paperclip and will snap back in place after you place a label inside them.

For detailed information about programming your Shuttle device, please refer to your user's Guide found on the Software CD or log-on to <http://www.contourdesign.com>

The Contour Shuttle Device Control Panel is where you will find all the information you need to operate your device.

1 TARGET APPLICATION MENU

This is the menu for viewing or selecting your Application Settings. Application settings define what the ShuttlePRO buttons or knobs do in different programs. Browse this list to see what software programs your ShuttlePRO is ready to control. If you want to control additional software programs with your ShuttlePRO, you will need Application Settings for them.



GLOBAL SETTINGS- is a generic setting that defines what the device will do in software programs that don't have their own Application Settings.

CREATE NEW SETTINGS- If you want to control a software program with your device but no pre-configured settings are available for it, this command will let you create your own device Application Setting.

IMPORT SETTINGS- is for loading a saved setting into your Control Panel. You can also load device Application Settings by double-clicking them in the Finder.

EXPORT SETTINGS- saves a copy of an Application Setting for sharing or backup.

EXPORT SETTINGS INFO- exports readable information about all installed application settings.

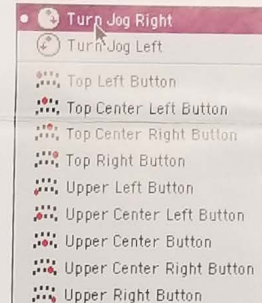
REMOVE SETTINGS- deletes an Application Setting from the control panel.

RENAME SETTINGS- lets you rename an existing application setting.

INSTALLED SETTINGS LIST- This is the entire list of Application Settings that are installed.

2 USER ACTION MENU

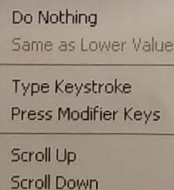
This menu selects which ShuttlePRO button or knob you are displaying or editing in the Control Panel. If you'd like to re-program a setting, you will select your application settings in the Target Application menu, and then select the button or dial you'd like to re-program in this menu.



Note: The Control Panel features and images will vary depending on the shuttle device you have installed.

3 COMPUTER RESPONSE MENU

This menu is where you determine what the device button or knob selected in the "User Action" Menu will do when activated.



DO NOTHING- The Shuttle component is inactive.

SAME AS LOWER VALUE- Selecting this lets you duplicate the commands for the previous Shuttle position. For example with this option you can program the Shuttle knob to perform the same command in shuttle Zone 2 as Shuttle Zone 1.

PRESS MODIFIER- This command lets you activate a keyboard modifier key (such as the control, option, command, shift or caps lock key) with a device button.

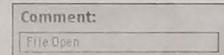
TYPE KEYSTROKE- This option lets you program a keyboard shortcut to the Shuttle component selected in the User Action Menu. You can program such commands as "Command-S" for save, the right arrow key to advance 1 frame, or "Command-C" to copy a selection to the keyboard. You must click your mouse into the field to activate it before programming.

OPEN FILE OR FOLDER- This command lets you open a file or folder with the touch of a button.

SWITCH SETTINGS- (ShuttlePRO series on OS X ONLY) If there is more than one set of application settings for an application this option will enable you to switch between them.

4 COMMENT FIELD

This is an optional field where you can briefly describe the button or dial setting for your quick reference. You may find it particularly helpful if you program your own settings and want to quickly review what each button or knob does.



SCROLL FUNCTIONS- This lets you assign scrolling functions and directions to a Shuttle component.

CLICK FUNCTIONS- (OS X ONLY) Enables you to assign mouse click functions to a Shuttle component.

ShuttlePRO²



New and Improved!
2 Additional Buttons

Weighted and Balanced
Alloy Jog Wheel

Advanced Software
Programmability

Macintosh®
& Windows®
COMPATIBLE



www.contourdesign.com